

**NOW
LEASING**

CLASS A OFFICE 4401 NORTH MESA

EPICENTER AN OFFICE COMMUNITY - EL PASO-CENTRAL

APPROX. 29,618 RSF

LOCATION:

**DEMISABLE
1ST & 2ND FLOOR**

AMENITIES:

- Large Class A Multi-Use Space with Abundant Natural Light
- Ample Free Parking
- Optional Covered Parking Available
- Ultra-Fast High Speed Fiber Broadband Available
- Signage Available
- Furnishings Negotiable



Centrally Located Minutes from
Downtown El Paso at the Intersection
of I-10 and Executive Center Blvd.
Adjacent to UTEP, Downtown El Paso,
Juarez, Mexico, and Only 45 Minutes to
Las Cruces

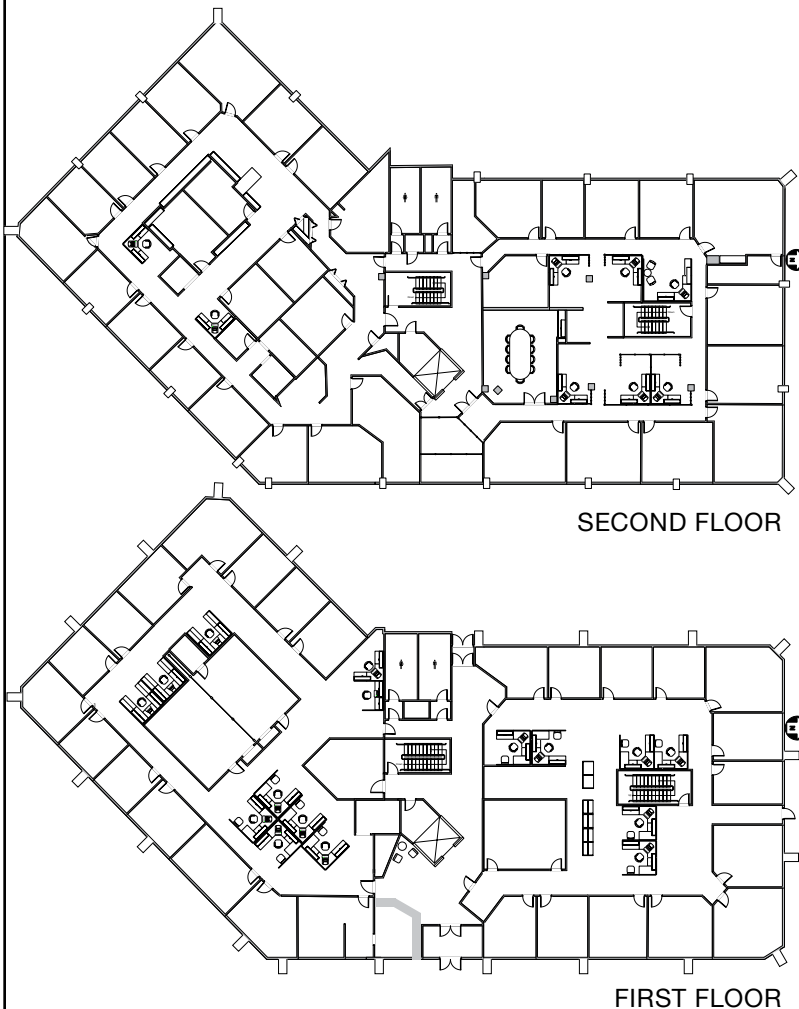
TRAFFIC COUNT

131,702+ At the Intersection
per day of I-10 and
Executive Center
Blvd

KEY TENANTS

GSA, Time Square Media, Pizza Properties,
Sunbowl Association, New American Funding,
El Paso County, Molina Healthcare,
Texas A&M University, Tenet Healthcare,
C.H. Robinson

**ON-SITE PROPERTY
MANAGEMENT &
MAINTENANCE WITH
24 HOUR EMERGENCY
SERVICE AVAILABLE**



www.epleasing.com | info@epleasing.com

PROFESSIONALLY MANAGED BY EP SHALOM MANAGEMENT, LLC
444 EXECUTIVE CENTER BLVD., SUITE 120, EL PASO, TX 79902

915-532-3456

Notwithstanding any other information (including, without limitation, any marketing, sales, advertising, brochures, or similar information), all prices, building design, architectural renderings, plans, amenities, features and specifications or any and all improvements to any part of the property are subject to change or cancellation without notice.